

A&D WEIGHING

HIGH PRESSURE WASHDOWN SCALES

IP69K



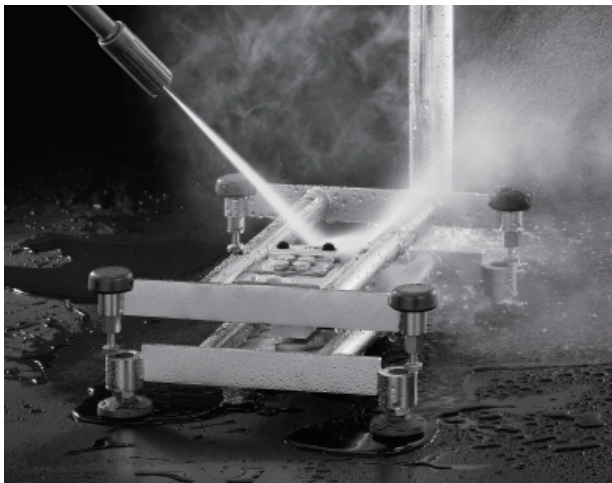
SW SERIES

AND
A&D Weighing

The SW Super Washdown scales from A&D are designed to withstand the most demanding process conditions. From dusty to wet environments, including food processing plants where cleanliness and sanitation are of critical importance, the SW scales are built to endure the extreme conditions of high pressure and temperature water as specified by the IP69K standard (1450 psi and 175°F).



Withstands extremely damp environments



Load cell also protected at the IP69K level

Features

- IP69K - the highest level of dust and water-proofing
- Ultimate protection against the effects of condensation
- Streamlined construction for easy cleaning
- Stainless steel weighing pan, frame, and hermetically sealed load cell*
- Rugged and adjustable indicator bracket
- Capacitive keys for light touch operation
- Bright, multicolored LED display
- Five Position Comparator Function
- Counting Function
- Desktop/wall-mount bracket available
- Optional rechargeable battery, RS-232C + comparator, and RS-422 / 485 available

* Weighing pan = SUS 304
 Frame = SUS 304
 Load cell = SUS 630



HIGH PRESSURE WASHDOWN SCALES



The multicolored LED is highly visible and intuitive.



The adjustable sensitivity capacitive keys allow for light-touch operation and can not be punctured by sharp objects.



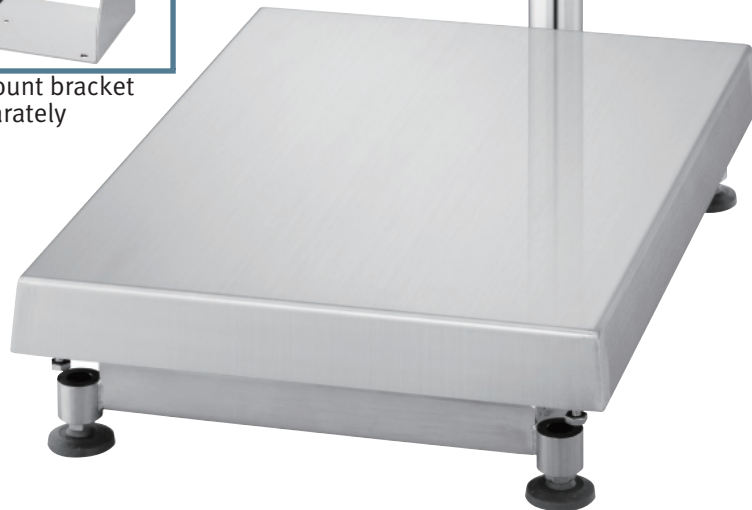
The desktop/wall-mount bracket may be ordered separately



The bracket angle is adjustable to 0°, 30°, 60°, and 90°.

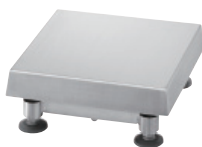


The column can be set on the longitudinal side.



The streamlined construction is ideal for washdown applications.

Three Pan Sizes



Small
9.8" x 9.8"
SW-__KS models



Medium
11.8" x 15.0"
SW-__KM models



Large
15.4" x 20.9"
SW-__KL models

SW Series Specifications

MODEL		SW-6KS	SW-15KS	SW-15KM	SW-30KM	SW-60KM	SW-150KM	SW-60KL	SW-150KL
lb	Capacity	13	33	33	66	130	330	130	330
	Min. Display	0.005 0.002* 0.001	0.01 0.005* 0.002	0.01 0.005* 0.002	0.02 0.01* 0.005	0.05 0.02* 0.01	0.1 0.05* 0.02	0.05 0.02* 0.01	0.1 0.05* 0.02
oz	Capacity	210	520	520	1050	2100	5200	2100	5200
	Min. Display	0.1 0.05* 0.02	0.2 0.1* 0.05	0.2 0.1* 0.05	0.5 0.2* 0.1	1 0.5* 0.2	2 1* 0.5	1 0.5* 0.2	2 1* 0.5
kg	Capacity	6	15	15	30	60	150	60	150
	Min. Display	0.002 0.001* 0.0005	0.005 0.002* 0.001	0.005 0.002* 0.001	0.01 0.005* 0.002	0.02 0.01* 0.005	0.05 0.02* 0.01	0.02 0.01* 0.005	0.05 0.02* 0.01
g	Capacity	6000	15000	15000	30000	-	-	-	-
	Min. Display	2 1* 0.5	5 2* 1	5 2* 1	10 2* 1	-	-	-	-
lb-oz	Capacity (lb)	13	33	33	66	130	330	130	330
	Min. display (oz)	0.1	0.1	0.1	0.1	1	1	1	1
Number of samples		5 (can be changed to 10, 20, 50 or 100) pieces							
Maximum count		120,000 pcs	150,000 pcs	150,000 pcs	150,000 pcs	120,000 pcs	150,000 pcs	120,000 pcs	150,000 pcs
Minimum unit weight		0.05 g	0.1 g	0.1 g	0.2 g	0.5 g	0.1 g	0.5 g	0.1 g
Repeatability (Std. deviation)		0.002 lb	0.005 lb	0.005 lb	0.01 lb	0.02 lb	0.05 lb	0.02 lb	0.05 lb
Linearity		±0.005 lb	±0.01 lb	±0.01 lb	±0.02 lb	±0.05 lb	±0.1 kg	±0.05 lb	±0.1 lb
Sensitivity drift		±20 ppm / °C (5°C to 35°C / 41°F to 95°F)							
Display		7 segment LED display (character height 14.6 mm) Comparator light, Red/Yellow/Green/Yellow/Red LED							
Display update		10 times per second							
Operating conditions		-10°C to 40°C / 14°F to 104°F, 85% R.H. or less (non-condensing)							
Power supply		AC main (100V~240V) or SLA Battery (option), Approximately 90 hours operation							
Weighing pan size		250 x 250 mm / 9.8 x 9.8 in.		300 x 380 mm / 11.8 x 15.0 in.			390 x 530 mm / 15.4 x 20.9 in.		
Dimensions		250(W) x 480(D) x 353.5(H) mm 9.8(W) x 18.9(D) x 13.9(H) in.		300(W) x 601(D) x 722.5(H) mm 11.8(W) x 23.7(D) x 28.4(H) in.			390(W) x 751(D) x 722.5(H) mm 15.4(W) x 29.6(D) x 28.4(H) in.		
Weight (approximately)		7.7 kg / 17.0 lb		13.0 kg / 28.7 lb			16.2 kg / 35.7 lb		
Shipping Weight		11 kg / 25 lb		17.4 kg / 39 lb			22.1 kg / 49 lb		
Calibration weight		6 kg / 12 lb	15 kg / 30 lb	15 kg / 30 lb	30 kg / 60 lb	60 kg / 120 lb	150 kg / 300 lb	60 kg / 120 lb	150 kg / 300 lb

* Factory setting

Distributed by:

Options

- **SW03*** RS-232C plus comparator relay output
- **SW-04*** RS-422/485
- **SW-11** Desktop/wall-mount bracket
- **HC-06i** Rechargeable Battery Pack

* SW-03 and SW-04 cannot be used at the same time.

* The SW is not IP69K compliant with SW-03 or SW-04.