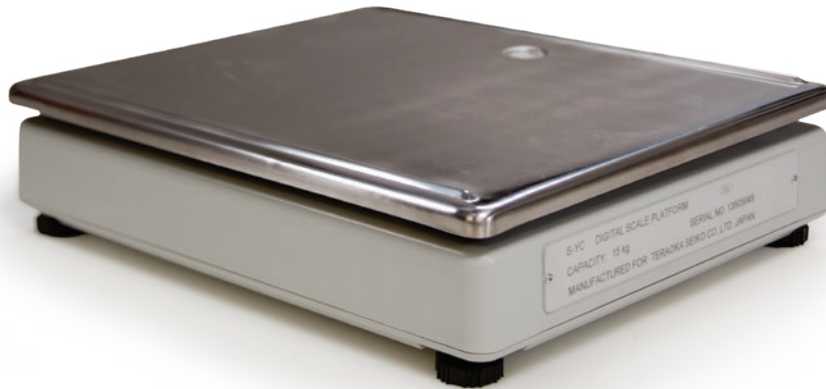


DIGI® S-YC Series

Remote Scale Base Platforms

COUNTING SCALES



Specifications

Output Impedance:

350 ±5 ohms

Insulation Resistance:

>500 Megohms

Rated Output:

1.0016 mV/V

Color Code:

Green.....+ Output
Yellow..... – Output
Black..... Shield
White..... – Input
Red..... + Input

Load Cell Type:

K-Type DIGI cell

Load Cell Cable Length:

118 in (3 m)

Operating Temperature:

14° F to 104° F (-10° C to 40° C)

Warranty:

Two-year limited warranty

Standard Features

- Stainless steel platter
- ABS injection-molded plastic base
- Single-point strain gauge load cell
- Adjustable legs
- Leveling bubble
- 14-Pin connector on three meter cable

Part Number/Price

Part #	Description	Platter Dimensions	Overall Dimensions	Est. Weight	Price
154835	500 g (1 lb)	7.9 x 5.6 in (201 x 143 mm)	13.4 x 11.1 x 3.5 in (341 x 284 x 90 mm)	7.7 lb (3.5 kg)	Consult
154836	1 kg (2 lb)	9.6 x 6.9 in (244 x 177 mm)	13.4 x 11.1 x 3.5 in (341 x 284 x 90 mm)	7.7 lb (3.5 kg)	Consult
154838	2.5 kg (5 lb)	13.4 x 11.1 in (341 x 284 mm)	13.4 x 11.1 x 4.75 in (341 x 284 x 120 mm)	11 lb (5 kg)	Consult
154839	5 kg (10 lb)	13.4 x 11.1 in (341 x 284 mm)	13.4 x 11.1 x 4.75 in (341 x 284 x 120 mm)	11 lb (5 kg)	Consult
154840	10 kg (20 lb)	13.4 x 11.1 in (341 x 284 mm)	13.4 x 11.1 x 4.75 in (341 x 284 x 120 mm)	11 lb (5 kg)	Consult
154841	25 kg (50 lb)	13.4 x 11.1 in (341 x 284 mm)	13.4 x 11.1 x 4.75 in (341 x 284 x 120 mm)	11 lb (5 kg)	Consult

www.ricelake.com | Phone: 800-472-6703

RICELAKE