

MS202

Permanent Monorail Scales

Specifications

Construction:

Zinc-plated steel construction (part number 19744, 19745)
 Stainless steel construction (part number 196885, 196888)

Load Cell Construction:

Stainless steel

Bridge Resistance:

350 ohms nominal

Rated Output:

2 mV/V

Nonlinearity:

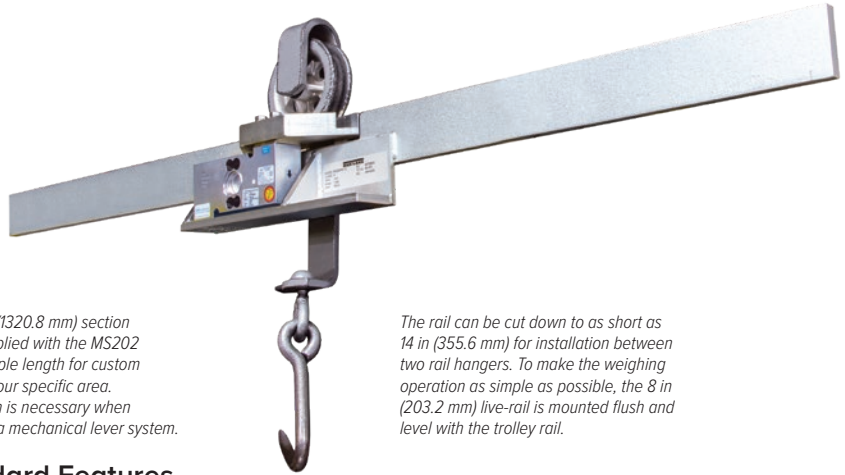
0.03% full scale

Approvals:

NTEP CC 90-003, Class III, nmax 1500
 Measurement Canada

Warranty:

One-year limited



The 52 in (1320.8 mm) section of rail supplied with the MS202 allows ample length for custom fitting to your specific area. This length is necessary when replacing a mechanical lever system.

The rail can be cut down to as short as 14 in (355.6 mm) for installation between two rail hangers. To make the weighing operation as simple as possible, the 8 in (203.2 mm) live-rail is mounted flush and level with the trolley rail.

Standard Features

- 8-in live-rail designed to weigh one trolley at a time
- 750 x 0.5 lb resolution in both portable and permanent models
- Available for rail sizes 3/8 x 2 1/2 in or 1/2 x 2 1/2 in
- Requires less than 41 in of straight rail to install (14 in between rail hangers for permanent model)
- Zinc-plated, steel construction
- High accuracy, stainless steel load cell
- 25 ft of load cell cable for flexible installation
- Slightly recessed live-rail for the trolley roller provides stable weighments

APPROVALS



Part Number/Price (Scale Only)

Part #	Description	Est. Weight	Price
19744	MS202HB-3/8 in	38 lb	Consult
19745	MS202HB-1/2 in	38 lb	Consult
196885	MS202HB-SS 3/8 in, SST rail	38 lb	Consult
196888	MS202HB-SS 1/2 in, SST rail	38 lb	Consult
167585	Load cell, 500 kg 2 mv/v 350 ohm SST construction, with 25 ft of cable	6 lb	Consult

Options/Accessories

Part #	Description	Price
16984	Additional operating manual	Consult

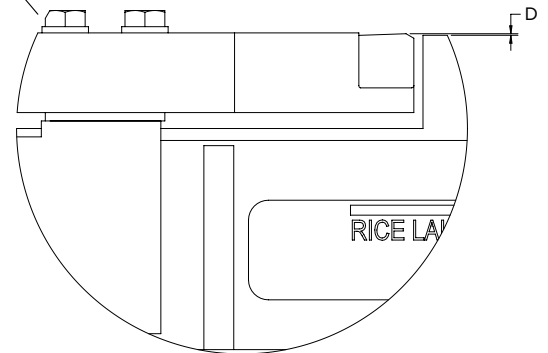
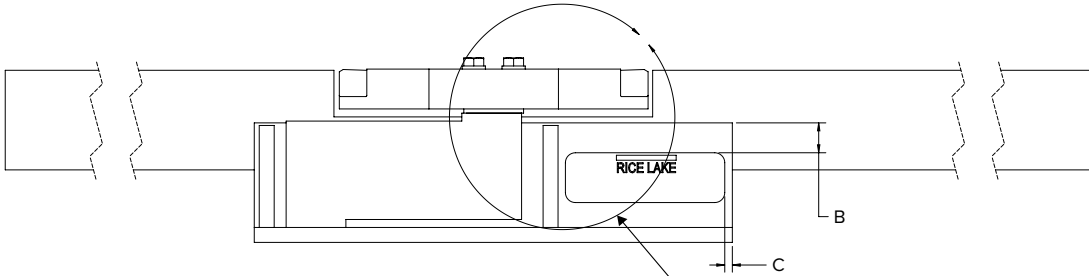
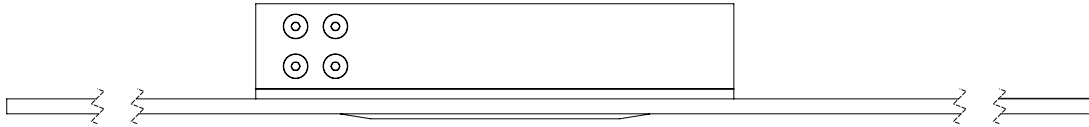
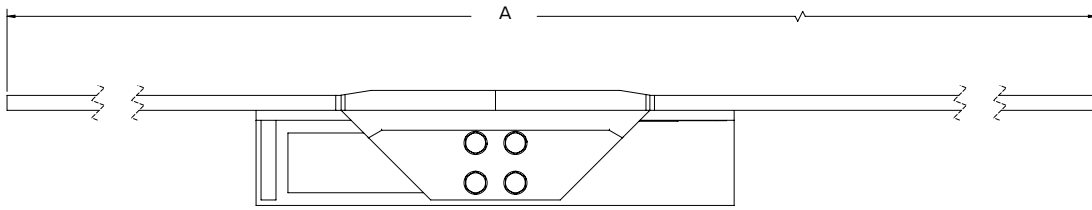
MONORAIL SCALES

www.ricelake.com | Phone: 800-472-6703

RICE LAKE

MS202

Permanent Monorail Scales



Dimensions	
A	52.00±0.03 in
B	0.75 in
C	0.19 in
D	0.060/0.020 in