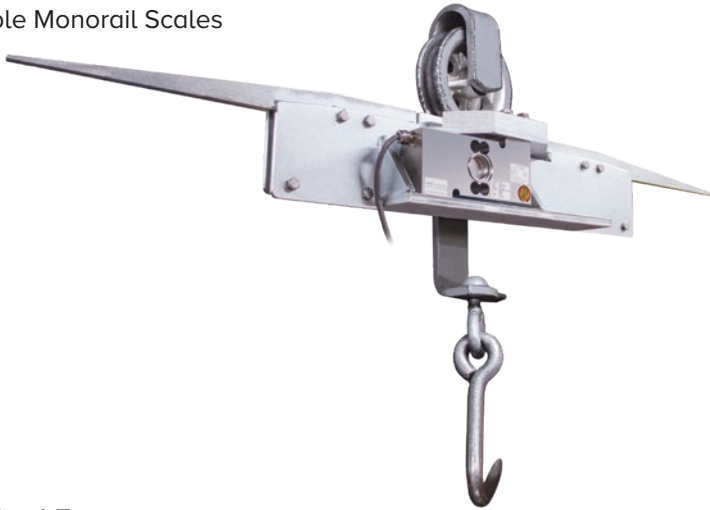


MS200

Portable Monorail Scales



Specifications

Construction:

Zinc-plated steel construction, stainless steel hardware

Load Cell Construction:

Stainless steel

Bridge Resistance:

350 ohms nominal

Rated Output:

2 mV/V

Nonlinearity:

0.03% full scale

Approvals:

NTEP CC 90-003, Class III, nmax 1500

Warranty:

One-year limited

Standard Features

- 8-in live-rail designed to weigh one trolley at a time
- 750 x 0.5 lb resolution in both portable and permanent models
- Compatible with both 3/8 in and 1/2 in rails
- Requires less than 41 in of straight rail to install
- Zinc-plated, steel construction
- 25 ft of load cell cable for flexible installation
- Slightly recessed live-rail for the trolley roller provides stable weighments

APPROVALS

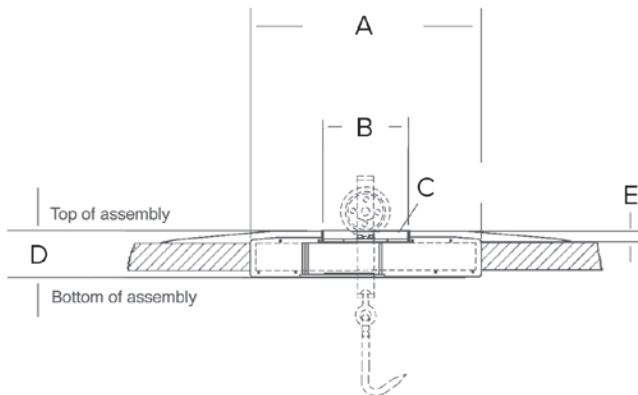


Part Number/Price (Scale Only)

Part #	Description	Est. Weight	Price
19743	MS200HB, NTEP Certified portable	38 lb	Consult
167585	Load cell, 500 kg 2 mv/v 350 ohm SST construction, with 25 ft of cable	6 lb	Consult

Options/Accessories

Part #	Description	Price
16984	Additional operating manual	Consult



Dimensions	
A	21.0 in (533.4 mm)
B	8.0 in (203.2 mm)
C	8.0 in live rail (203.2 mm)
D	4.5 in (114.3 mm)
E	1.13 in (28.7 mm)