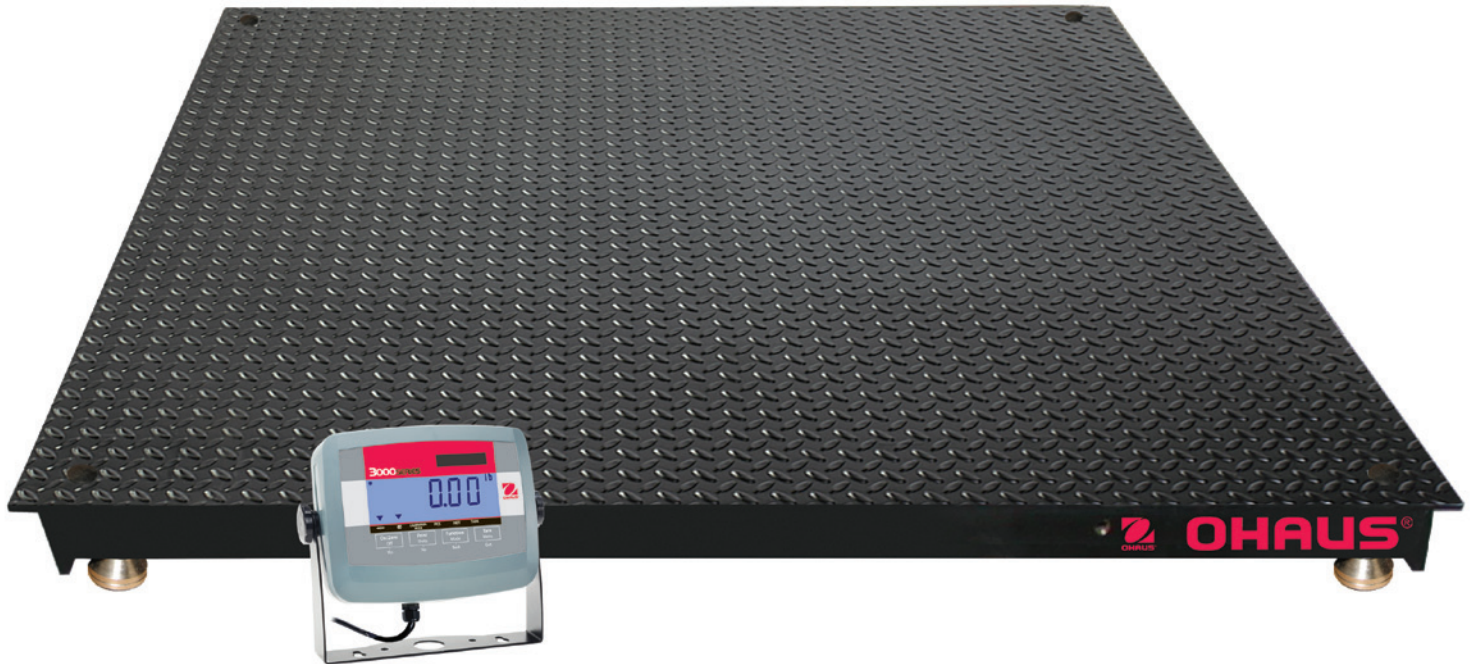




OHAUS VN Series

Economical Floor Scales and Platforms



Affordability, Durability, Ohaus Quality & Value

The OHAUS VN Series of floor platforms and scales are the value solution to your dry weighing needs in industrial and commercial applications. Its high-quality construction is designed to minimize distortion under heavy loads, and ensures years of dependable use. NTEP certification ensures consistent weighing performance. Available with ramps and mounting feet, the OHAUS VN Series floor platforms and scales offer a unique combination of value, quality and dependability your company can rely on.

Standard Features Include:

- 5,000 lb capacity with 1 lb readability in 2 popular platform sizes: 4' x 4' and 5' x 5'
- 5mm / 0.196" thick painted carbon steel top plate with raised cross-hatch surface for added slip resistance
- Four NTEP certified shear beam load cells protected to IP67
- Side access NEMA 4X / IP65 dust and water protected stainless steel junction box with 16.5' long indicator cable
- Four self-swiveling ball-in-cup feet, with top-access leveling adjustment for easy installation
- Internal structural bracing ensures platform rigidity during everyday use
- Carbon steel eyebolts (included) attach to side of platform for easy lifting and positioning
- OHAUS T31P indicator included with scale featuring:
 - Backlit LCD display with high-visibility 1-inch high digits
 - lb and kg weighing units in NTEP mode – g, oz and lb:oz also available when not in NTEP mode
 - Power using included 80-hour internal rechargeable lead acid battery or included AC adapter
 - Counting mode for warehousing and inventory applications
 - Wall mount bracket included

VN Series Economical Floor Scales and Plat

VN Series Floor Scales Include The Durable T31P Indicator

T31P Features:

- Large 1" high digit backlit LCD display quickly displays results in a choice of lb or kg. The power-on unit is selectable, and either the lb or kg unit can be turned off for easier use.
- Includes Counting Mode with a minimum Average Piece Weight of 1d, selectable sample sizes, automatic retention of last sample size used and Average Piece Weight. For installations where Counting Mode is not required, the parts counting software can be selected off.
- Built-in bidirectional RS232C interface for printing or connection to PC. Printing intervals can be set to manual (using Print key), continuous, on stable weight, or an interval between 1 second and 60 minutes.
- Geographical gravity correction software allows quick adjustment of calibration to local conditions without need for recalibration of the VN Floor Scale. All VN Floor Scales are factory calibrated and must be set to match local gravity situation.
- Durable mechanical switch keypad with dedicated Print, Tare and Function keys for quick and easy operation
- Powered using either the included AC adapter or the included 100-hour internal rechargeable battery pack.
- Reversible back which allows installation with the floor platform and power connections exiting from the top or the bottom of the indicator housing.
- The T31P includes four wall mounting holes for screw mounting to bench or wall – it can also be wall or table mounted using the included wall mount bracket for full tilt adjustment of the indicator.
- Software lockouts of menu operations for setup, readout, mode, unit and print menu options. In NTEP certified operation, certain menu options are automatically locked-out.



Indicator Accessories

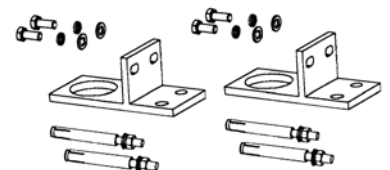
| Description | OHAUS Number |
|---|--------------|
| Compact Dot Matrix Impact Printer..... | 80252042 |
| Compact Thermal Printer..... | 80251992 |
| Ohaus Collect Software..... | 80500746 |
| TAL Software WinWedge..... | SW12W |
| Paper for Printer, 80252042 (1 roll)..... | 80251932 |
| Ribbon for Printer, 80252042..... | 80251933 |
| RS232 Cable & Adapter, 80252042 | |
| Printer to T31P..... | 80252571 |
| RS232 Cable, PC 9-pin to T31P..... | 80500525 |
| RS232 Cable, PC 25-pin to T31P..... | 80500524 |

Options

- Ramps
4' or 5' wide
with foot mounting
plates



- Fixed Location
Foot Mounting Plate Kits
Set of 2



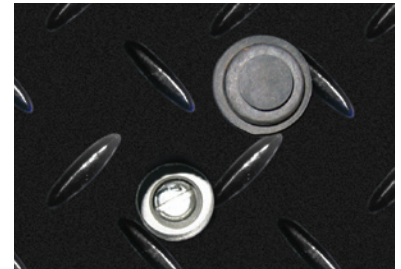
OHAUS VN Series Floor Scale and Base Standard Features:



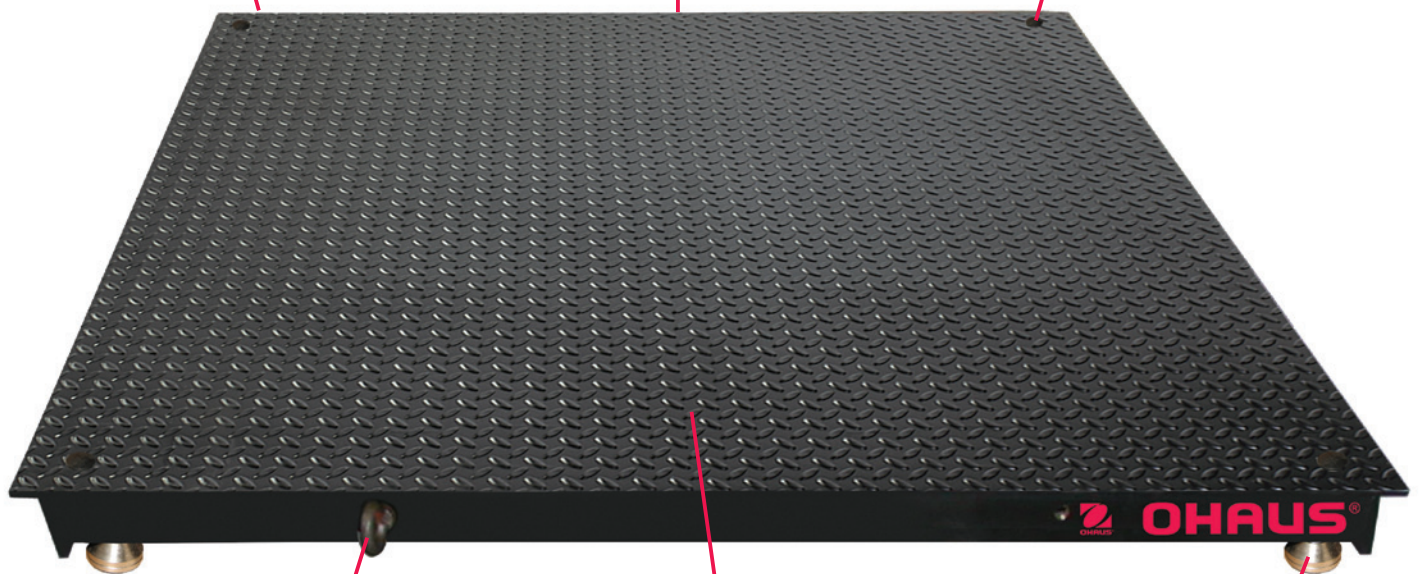
Welded steel rib design and thick 0.196 in / 5 mm top plate design provides structural stiffness



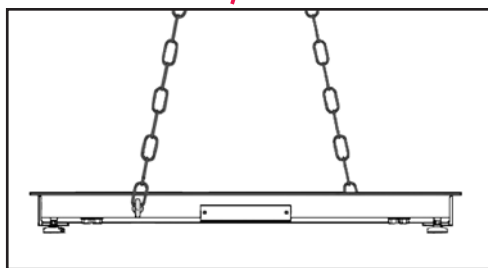
NEMA 4X/IP65 Stainless Steel Side-Access Junction Box with IP67 load cells limits effect of water on base



Top access to foot height adjustment screws makes leveling easy



Painted tread plate platform top of added slip resistance



Carbon steel eyebolts included for easy installation



Stainless steel feet with rubber bottoms are attached to each load cell – ball-in-cup design makes feet self-swiveling and base easier to install

VN Series Economical Floor Scales and Platforms

Specifications

| Scale Models | VN31P5000L | VN31P5000X |
|---------------------------------------|---|--|
| NTEP Certified Capacity x Readability | 5000 lb x 1 lb / 2500 kg x 0.5 kg | |
| NTEP Resolution | 1:5,000 | |
| Indicator | T31P | |
| Construction | 5mm / 0.196 in painted carbon steel platform with ABS housed indicator | |
| Load Cell | 4 x 2,500 lb nickel-plated alloy steel shear beam IP67 protected | |
| Feet | 4 x self-swiveling ball-in-cup design with rubber bottom, adjustable height top levelling | |
| Junction Box | NEMA 4X / IP65, 304 stainless steel, with 16.5 ft / 3 m long indicator cable | |
| Maximum Central Load | 160% of maximum capacity | |
| Safe Endload Capacity | 100% of maximum capacity | |
| Protection | IP67 for shear beam load cells, NEMA4X/IP65 for junction box | |
| Weighing Units | lb or kg | |
| Modes | Weighing, Counting* | |
| Display | 1 in / 25 mm high, 6-digit, 7-segment bright white backlit LCD | |
| Keyboard | 4-button mechanical switches | |
| Stabilization Time | Within 2 seconds | |
| Auto-zero Tracking | Off, 0.5, 1 or 3d | |
| Zeroing Range | 0%, 2% or 100% of capacity | |
| Span Calibration | 5 lb or kg to 100% of capacity | |
| Interface | RS232C, bidirectional | |
| Operating Temperature Range | 14°F to 104°F / -10°C to 40°C | |
| Power | 9VDC, 0.5A AC adapter or internal rechargeable sealed lead acid battery (100-hour typical operation with full charge) – both included | |
| Platform Dimensions (W x D x H) | 4ft x 4ft x 3.5 in | 5ft x 5ft x 3.5 in |
| Indicator Dimensions (W x D x H) | 8.2 x 2.8 x 6.5 in / 210 x 71 x 168 mm | |
| Scale Shipping Dimensions (W x D x H) | 64.6 x 53 x 13.4 in / 1640 x 1350 x 340 mm | 75.4 x 64 x 13.4 in / 1915 x 1626 x 340 mm |
| Net Weight | 282 lb / 128 kg | 419 lb / 190 kg |
| Shipping Weight | 333 lb / 151 kg | 533 lb / 242 kg |

* Counting feature not NTEP certified

| Platform Models | VN5000L | VN5000X |
|--|---|--|
| NTEP Certified Capacity x Readability | 5000 lb x 1 lb 2500 kg x 0.5 kg | |
| NTEP Resolution | 1:5,000 | |
| Platform Construction | 5mm / 0.2 in painted carbon steel platform | |
| Load Cell | 4 x 2,500 lb nickel-plated alloy steel shear beam IP67 protected | |
| Feet | 4 x self-swiveling ball-in-cup design with rubber bottom, adjustable height | |
| Junction Box | NEMA4X/IP65, 304 stainless steel, with 16.5 ft / 3 m long indicator cable | |
| Maximum Central Load | 160% of maximum capacity | |
| Safe Endload Capacity | 100% of maximum capacity | |
| LC Output Impedance / Excitation Voltage | 350 ohm / 10V DC ~max 15V | |
| Protection | IP67 for shear beam load cells, IP65/NEMA4X for junction box | |
| Operating Temperature | 14°F to 104°F / -10°C to 40°C | |
| Platform Dimensions | 4 ft x 4 ft x 3.5 in | 5 ft x 5 ft x 3.5 in |
| Shipping Dimensions | 48.4 x 48.4 x 10.6 in / 1230 x 1230 x 270 mm | 60.4 x 60.4 x 10.6 in / 1535 x 1535 x 270 mm |
| Net Weight | 271 lb / 123 kg | 408 lb / 185 kg |
| Shipping Weight | 289 lb / 131 kg | 430 lb / 195 kg |

Compliance

- **Safety and EMC:** EN60950, EN61326, FCC, CE, cUL_{US}
- **NTEP Certifications:** T31P Indicator: CC 08-066, Load Cell: CC 91-043A4, VN Platform: CC 08-048A1
- **Quality:** OHAUS quality management system registered to ISO 9001:2000

OHAUS CORPORATION

* 7 Campus Drive
Suite 310
Parsippany, NJ 07054 USA

Tel: 800.672.7722
973.377.9000
Fax: 973.944.7177

www.ohaus.com

With offices throughout Europe,
Asia, and Latin America

* ISO 9001

Registered Quality Management System

