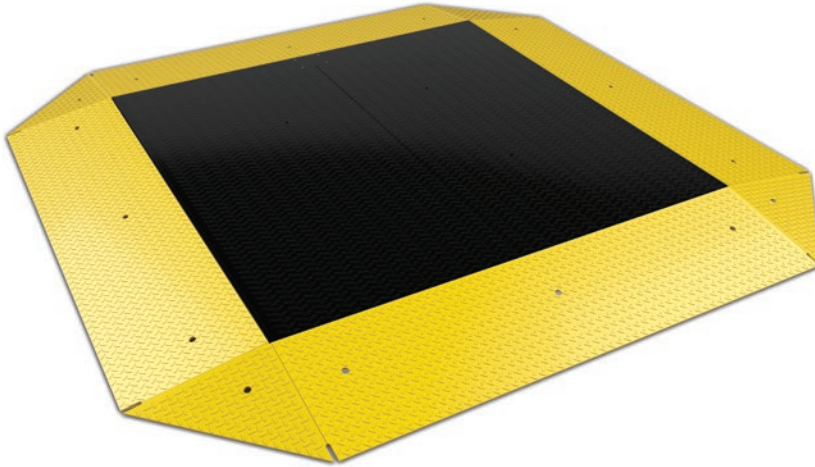


RoughDeck PC

Pancake Deck Cargo Scale



Specifications

End Load Capacity:

100% full scale at 20,000 lb

Cable Length:

20 ft (6.1 m) for connecting junction box to indicator

Ramp Incline Angle:

6.5 degrees

Threaded Eyebolt:

Four holes (3/4-10NC)

Warranty (limited):

RoughDeck PC weldment five years, load cells two years, all other components one year

Standard Features

- Top access JB4SS TuffSeal® signal trim junction box
- Foot adjustment holes for leveling scale from above
- Four ball encapsulated feet
- Four IP66, alloy steel 10,000 lb load cells
- Epoxy paint for added protection. Ramps are painted yellow and scale is painted black to easily distinguish live weighing surface.
- 20 ft SURVIVOR® EL147HE hostile environment load cell cable to connect scale to indicator. Cable can exit scale/ramp from any corner.
- Scale and wraparound ramps to access scale from all sides
- Ramps have integrated foot keeper plates to keep scale in check with ramps
- Holes in ramps to access internal anchor tabs from above. 16 anchor bolts at 3/4 in included
- All surfaces are diamond tread

Part Number/Price

Part #	Overall Size (W x L x H)	Ramp Angle of Incline	Capacity	Est. Weight	Price
194338	Scale: 10 ft x 10 ft x 4 3/8 in Ramps: (4) 10 ft x 3 ft x 4 3/8 in Corners: (4) 4 ft 1 in x 3 ft x 4 3/8 in	6.5°	20,000 lb	6,800 lb	Consult

RoughDeck PC

Pancake Deck Cargo Scale

Dimensions			
A	120.0in	C	4.37in
B	35.8in	D	0.38in

