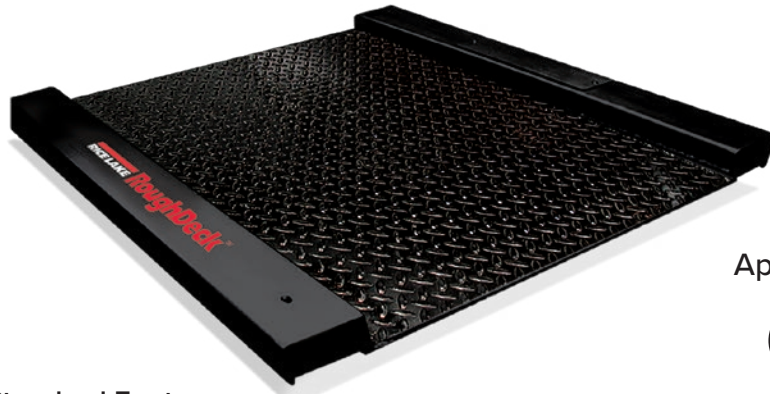


RoughDeck® BDP Mild Steel

Barrel, Drum, Pallet Scale – Stationary Model



Specifications

End Load Capacity:
 1,000 lb: 100% full scale
 2,500 lb: 80% full scale

Cable Length:
 10 ft (3 m)

Threaded Eyebolt:
 Hole (1/2-13 NC) located in center of deck for easy lifting

Warranty:
 RoughDeck BDP weldment three years, load cells two years, all other components one year

Approvals



Approvals:
 NTEP CC 03-060, Class III 2,500 d
 Measurement Canada AM-5578
 (500 kg) Class III 2,500 d
 (1,000 kg) Class III 2,000 d

Standard Features

- Live siderails
- Top access foot adjustment holes (holes are 1/2-13 threaded for lifting scale)
- Four adjustable stainless steel SUREFOOT™ support feet
- TuffSeal® JB4SS stainless steel, NEMA Type 4X junction box with signal trim card
- Diamond tread top plate
- Alloy steel load cells

Part Number/Price

Part #	Size (W x L) Not Including Side Rails	Capacity (Canadian Approved Capacities)	Est. Weight	Price
77962	30 in x 31 in	1,000 lb (500 kg)	205 lb	Consult
77963	30 in x 31 in	2,500 lb (1,000 kg)	205 lb	Consult
77964	36 in x 37 in	1,000 lb (500 kg)	265 lb	Consult
77965	36 in x 37 in	2,500 lb (1,000 kg)	265 lb	Consult
Part #	Size (W x L)	Ramp Angle of Incline	Est. Weight	Price
Access Ramps				
78011	30 in x 12 in (sold individually)	7.2°	25 lb	Consult
78012	36 in x 12 in (sold individually)	7.2°	30 lb	Consult

Options/Accessories

Part #	Description	Price
18777	Floor anchor plates, mild steel, set of 2 (for use with static scale, without ramps)	Consult
19352	RoughDeck floor stand for indicator, 36.3 in high, mild steel (for use with static scale)	Consult
126384	RoughDeck floor stand for indicator, 48 in high, mild steel	Consult
Consult	Mild steel deck with RL32018S IP66 stainless steel (cFMus approved) load cells and hardware	Consult
Consult	Mild steel deck with RL32218S-HE hermetically sealed IP69K stainless steel cFMus approved load cells and hardware	Consult

Dimensions Roughdeck BDP with access ramp

30 in x 31 in models			
A	30.0 in (762 mm)	D	3.31 in (84.1 mm)
B	31.0 in (787.4 mm)	G	30.0 in (762 mm)
C	40.0 in (1,016 mm)	H	12.0 in (304.8 mm)
36 in x 37 in models			
A	36.0 in (914.4 mm)	D	3.31 in (84.1 mm)
B	37.0 in (939.8 mm)	G	36.0 in (914.4 mm)
C	46.0 in (1,168.4 mm)	H	12.0 in (304.8 mm)

Distance from floor to top of center weighing surface: 1.62 in (41.2 mm)
 Distance from floor to bottom of weighing surface: 0.31 in (7.87 mm)

