

# iCP

## Intelligent Carriage Plate

### MOBILE WEIGHING SYSTEMS

Several factors can disrupt inventory management within a logistics warehouse. Duplicate procedures, inaccurate shipping data, and picking delays are some of the more costly disruptions.

The iCP, an integrated mobile weighing system, weighs pallet loads while being unloaded or transported with a forklift. The onboard indicator collects critical data and can share it wirelessly via built-in Bluetooth.

### Intelligent Carriage Plate

#### Scale for Forklift Trucks

##### Efficient

With the iCP, lifting, weighing, counting, accumulating, and transporting are accomplished as a single efficient operation.

##### Accurate

The iCP comes with optional NTEP capability for your Legal-for-Trade requirements.

##### Flexible

Compatible with most forklift truck carriages, the iCP requires no modification.

Can be attached to ITA Class II, III, & CLIV Carriages.

##### Safety

The load cell rating is set to withstand an overload of 300% without damaging the cell.

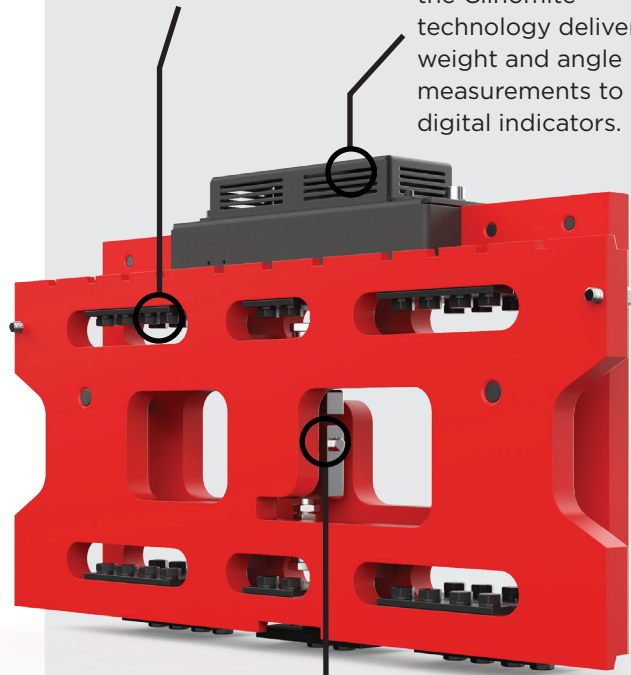


##### FLEXURES

Manufactured with high quality spring steel, RAVAS flexures are field-replaceable, reducing maintenance expense and downtime.

##### CLINOMITE TECHNOLOGY

Legal for trade application, the Clinomite technology delivers weight and angle measurements to digital indicators.



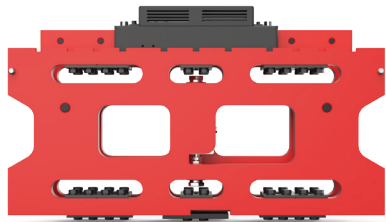
##### LOAD CELL

Ruggedized, field replaceable load cell provide reliable performance in challenging operating conditions.



**RAVAS**  
creating intelligence

[www.ravas.com](http://www.ravas.com)



## CHARACTERISTICS & BENEFITS

- Easy to install
- Attaches to ITA Class II, III, & CLIV Carriages
- Compatible with most attachments, clamps, fork positioners, side shifters, etc.
- Zero modification to the forklift
- Accurate and durable. Ideal for heavy duty applications
- Lift, weigh, count, accumulate, and transport in one operation
- Wireless technology available

## STANDARD SPECIFICATIONS

### NON-NTEP MAXIMUM CAPACITY

- Class II: 5,000 lbs.
- Class III: 15,000 lbs.
- Class IV: 10,000, 15,000, 20,000 lbs.

### NTEP CAPACITY

- Class II: 5,000 lbs.
- Class III: 10,000 lbs.
- Class IV: 12,000 lbs.

### GRADUATION

- 5 lbs. at 5,000 lbs
- 10 lbs. at 10,00 lbs
- 20 lbs. at 20,000 lbs

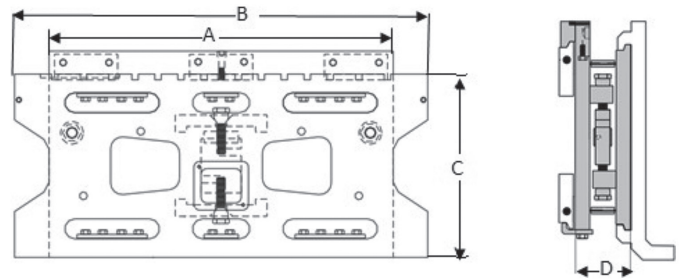
### SYSTEM TOLERANCE

- 0.2% of load lifted

### OPTIONS

- NTEP Certified (Legal for Trade)
- WiFi to ERP/WMS
- Cabled or Cableless

## DIMENSIONS



		Standard	Class II	Class III	Class IV
<b>A</b>	Width back plate		31"	36"	42"
<b>B</b>	Width front plate		36"	42"	48"
<b>C</b>	Height carriage plate		16"	20"	25"
<b>D</b>	Thickness carriage plate		4.75"	5.25"	6.5"

### Hcg

Horizontal center of gravity	2.4"	2.64"	3.25"
------------------------------	------	-------	-------

### Vcg

Vertical center of gravity	9"	11"	13.5"
----------------------------	----	-----	-------

Own weight (lbs.) based on standard dimensions

	350	570	1,150
--	-----	-----	-------

## RAVAS WeightsApp

Connect with your RAVAS Weighing System

- RAVAS WeightsApp for data capture on tablets and smart phones

